

The Lincoln Marsh Wetlands Guide



This book belongs to _____



The Lincoln Marsh Natural Area

A Facility of the Wheaton Park District
Wheaton, Illinois
630.871.2810

www.lincolnmarsh.org

Discover the wonders of Nature!



www.lincolnmarsh.org

Discover the Wonders of Wetlands...

You might be surprised what you find out!



Be Thankful for Wetlands...

Those wet and wild places –

- Store flood water
- Improve water quality
- Provide habitat
- Are beautiful and provide recreational opportunities
- The benefits are endless!

Share the value of wetlands with someone you know today!

Answers to crossword on pages 6-7:
ACROSS: 1. adaptation, 2. glaciers, 3. erosion, 4. wetland, 5. filter;
DOWN: 1. aquatic, 2. soil, 3. sedimentation,
4. water quality, 5. decomposers, 6. invertebrate

Lincoln Marsh
Natural Area



Discover the Wonders of Nature



www.lincolnmarsh.org

WETLAND JOURNAL

For each letter, write a word that describes a wetland or something found in it.
For example, you could write "water" after the letter "w."



W _____
E _____
T _____
L _____
A _____
N _____
D _____

● How did you feel about wetlands before your visit?

● What did you discover on your adventure that changed your feelings?

Wetland Pledge

Three ways I can control water pollution and conserve water:

1. _____
2. _____
3. _____

Three people I will tell about wetland benefits:

1. _____
2. _____
3. _____

WETLANDS ARE WONDERLANDS!

Wetlands provide many benefits to plants, humans and other animals. In this booklet, you'll unfold the wonders of wetlands and discover the many values they provide.

WORD FIND

Your goal is to find 21 hidden wetland words. They may be found across, down, diagonally, forward, or backward.

A	A	N	Y	M	P	H	Z	B	W	A	T	E	R	Y
P	M	A	W	S	E	F	C	X	D	W	E	F	V	U
G	U	E	T	H	S	P	O	N	G	Y	S	O	I	L
T	S	D	R	A	G	O	N	F	L	Y	H	S	I	O
U	K	R	E	I	Q	K	P	L	O	E	E	M	N	R
R	R	N	C	O	C	O	K	P	L	L	L	Q	M	T
T	A	R	R	J	M	A	R	S	H	O	T	F	E	N
L	T	S	E	G	T	H	N	U	I	P	E	B	V	O
E	F	W	A	N	E	X	D	B	Y	D	R	L	C	C
X	Z	Y	T	A	E	Z	B	A	I	A	C	U	B	D
D	W	E	I	V	F	R	O	G	F	T	U	E	G	O
A	H	R	O	I	S	J	G	V	K	T	T	B	L	O
C	R	A	N	B	E	R	R	Y	Q	M	P	E	N	L
K	O	I	L	O	P	M	Q	N	R	O	S	R	R	F
J	T	R	I	G	U	H	V	G	W	F	W	R	E	N
Y	D	Z	C	A	B	N	U	R	S	E	R	Y	B	A

Air

American Bittern

Blueberry

Bog

Cranberry

Dragonfly

Energy



Fen

Flood Control

Frog

Marsh

Muskrat

Nursery

Nymph



Recreation

Shelter

Spongy Soil

Swamp

Tadpole

Turtle

Water

WETLAND INVERTEBRATES

Check the animals you found!

INTOLERANT

Likes clean water

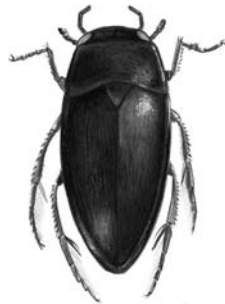
- Dragonfly Larvae
- Damsel Larvae
- Water Beetle Larvae
- Crayfish
- Water Boatman
- Dragonfly Adult
- Damsel Adult
- Water Beetle Adult
- Fingernail Clam



TOLERANT

Can live in clean **or** polluted water

- Leech
- Water Worms
- Left-Handed Snail
- Blood Worm Midge Larvae
- Flatworm



KIND OF TOLERANT

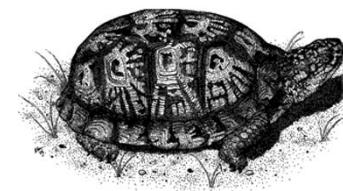
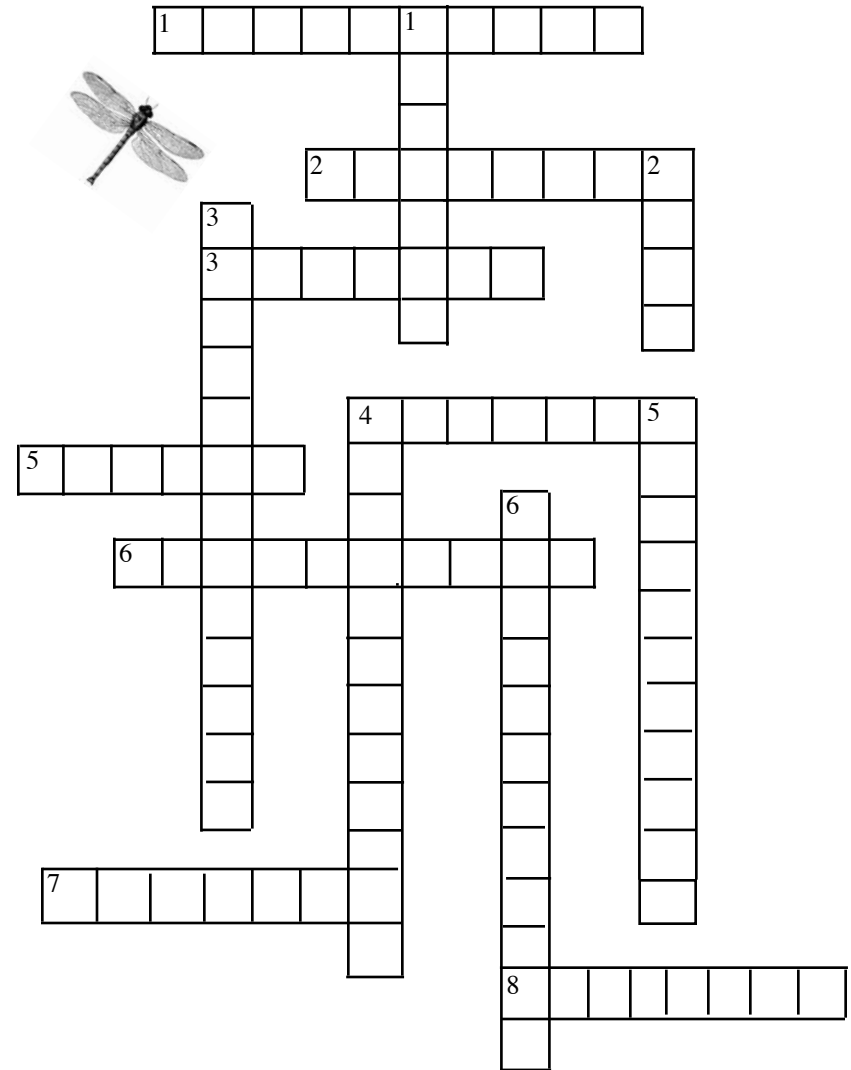
Can live in **some** pollution

- Sowbug
- Scud
- Mosquito Larvae
- Right-Handed Snail
- Midge Larvae

Total # of Species _____

Based on the kinds of animals you found, what can you say about the water quality of Lincoln Marsh? _____

WETLAND CROSSWORD



WETLAND WORDS FILL-IN

Answer the questions by filling in the blank words. Then fill in the words in the Wetland Crossword Puzzle.

ACROSS

1. Webbed feet is an _____ that helps frogs live in a wetland.
2. The _____ that covered Chicago during the Ice Age were one mile thick.
3. _____ happens when water washes soil away from the land.
4. The Lincoln Marsh is a type of _____.
5. Cattails help clean water when they _____ pollutants from the water.
6. Dragonfly nymphs are _____ to pollution.
7. Plants and animals meet their energy, air, water and shelter needs in their _____.
8. A leech is _____ to pollution.

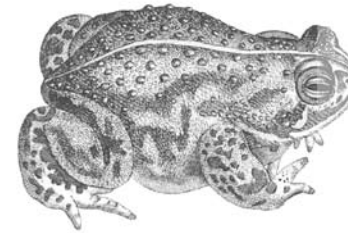


DOWN

1. _____ plants live in or near the water.
2. Wetland _____ acts like a sponge to absorb water.
3. Wetlands trap soil through a process called _____.
4. Damselfly larvae indicate good _____.
5. _____ help "recycle" dead plant and animal material.
6. An animal without a backbone is called an _____.

HOLD BACK THE RAIN

Wetlands are a place where stormwater can go. Wetland soils act like a sponge and soak up extra rainwater. The Lincoln Marsh gives Wheaton a place to put extra stormwater. Calculate how much water the Lincoln Marsh can hold.



The Lincoln Marsh can hold 300 acre/feet of water.

● What is an "acre/foot"?

An acre of land covered by a foot of water.

● How big is an acre?

Almost as big as a football field (43,560 square feet).

● How much water is in an "acre/foot"?

43,560 cubic feet of water.

● How many cubic feet of water can the Lincoln Marsh hold?

Fill in the blanks with the correct value

$$\underline{\hspace{2cm}} \text{ X } \underline{\hspace{2cm}} = \underline{\hspace{2cm}}$$

(water in one acre/foot) (# of acre/feet in Marsh) Cubic feet of water



THAT'S A LOT OF WATER!

Enough to fill 98 million one-gallon milk jugs, 1 billion cans of pop, or fill up Rice Pool and Northside Park Pool 10 times each!

EXPLORE YOUR WORLD!

Are you up for the challenge? Here are a few creative ways to test your observation skills outdoors.



Challenge #1

Head outdoors and take a walk to see if you can find something in nature that represents each color of the spectrum.

- Red _____
- Orange _____
- Yellow _____
- Green _____
- Blue _____
- Indigo _____
- Violet _____

Challenge #2

Are you ready to test your animal instincts? Head outdoors and find an animal to observe.

What type of animal did you choose (i.e. squirrel, bird)? _____

What was the animal doing? _____

Was the animal making any noise? Describe the sound. _____

Did you notice any unique animal adaptations? Explain. _____

Challenge #3

Learn some interesting facts about the animal you observed and share them with a friend! Even better, take your friend to see the animal firsthand!

HAVE TO HAVE A HABITAT



Animals and plants have certain needs that must be met in order to live in a community.

What are these needs?

- 1 _____
- 2 _____
- 3 _____
- 4 _____

● If you could choose to live in a marsh, a field or a forest, which habitat would you pick? _____

● What animal or plant would you be and why? _____

● Draw a picture of this plant or animal!

